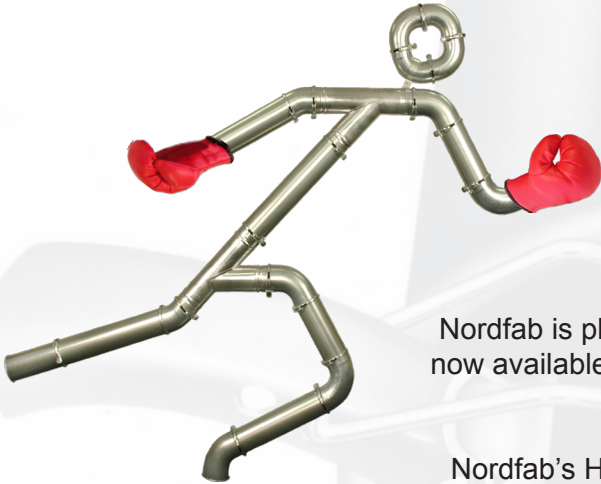


# The DUCTING Champion

just entered the Heavyweight Division

## Heavy Walled Ducting



Nordfab is pleased to announce our **NEW Heavy Walled Ducting!** QF duct is now available in 18ga galvanized from 4" to 6" diameters, and 16ga galvanized from 7" to 24" diameters.

Nordfab's Heavy Walled Ducting is designed for projects where transporting abrasive materials are required or to meet an engineer's specifications. It clamps together just like our standard pipe. Orders can ship in 4 to 10 days depending on order size.

### BENEFITS:

- 7" - 24" now meets SMACNA gauge requirements for class 3 duct.
- Transports most abrasive materials
- Quickly installs like our traditional ducting
- Designed to meet engineering specifications for heavier gauge material

*(Ducting greater than 24" is available in 18ga and angle flanged only).*



*Due to the heavier weight of the Heavy Walled Ducting, hanging requirement may change. Refer to your local building codes for acceptable hanging methods and weight requirements if suspended from the ceiling. Do not forget to allow for material buildup when calculating the weight.*



866-455-2130

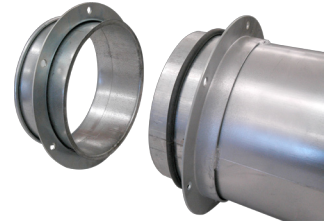
[www.ductingsystems.com](http://www.ductingsystems.com)

## Heavy Walled Coupling:

Because of the Heavy Walled Ducting's greater thickness, we've developed a **coupling pipe** for the Heavy Walled Duct that is used in place of an adjustable nipple. The coupling assembly consists of a pipe, expanded angle flange adapter, angle flange, and o-ring.

### Simply follow these install procedures:

1. Measure span.
2. Cut the coupling pipe assembly 1.75" shorter than open span.
3. Assemble loose angle ring, o-ring, and expanded angle flange adapter over cut end of coupling assembly. Do not tighten.
4. Install the coupling assembly using Nordfab clamps – attach both ends of the coupling pipe assembly. Tighten angle flanges together – compressing the o-ring for improved sealing.
5. After cutting the "coupling pipe" to length, The loose flange must be mechanically attached to the pipe. A mechanical attachment can be made using bolts, welding the angle flange to the pipe or other approved methods, to prevent the loose flange from losing its connection with the cut pipe (reference illustration).



When ordering heavy walled ducting, use the 3212 (LSB) or the 3214 (tubed).

## Heavy Walled Ducting is priced 40% more than our standard ducting

### Products Not Available in Heavy Wall Include:

Clamps, Adj. Nipple, O-Ring, Silencer, Ball Joint, Hose, Butterfly Valve, Bleed in Valve, Tuff Shield, No-loss Stackhead, Sliding Access Panel, Mist Recycler, and Fume Arms.

### Heavy Walled Pipe (40% up charge from standard pipe)

Ø	Part Number	Gauge	Length
4"	3200-04HG-100000	18	59.25"
5"	3200-05HG-100000	18	59.25"
6"	3200-06HG-100000	18	59.25"
7"	3200-07HG-100000	16	59.0625"
8"	3200-08HG-100000	16	59.0625"
9"	3200-09HG-100000	16	59.0625"
10"	3200-10HG-100000	16	58.75"
12"	3200-12HG-100000	16	58.75"
14"	3200-14HG-100000	16	58.75"
16"	3200-16HG-100000	16	58.75"
18"	3200-18HG-100000	16	58.75"
20"	3200-20HG-100000	16	58.75"
22"	3200-22HG-100000	16	58.75"
24"	3200-24HG-100000	16	58.75"

### Heavy Walled Coupling

Ø	Part Number	Gauge	Length	Price
4"	3200-04CN-100000	18	56.75"	\$48.22
5"	3200-05CN-100000	18	56.75"	\$52.45
6"	3200-06CN-100000	18	56.75"	\$62.58
7"	3200-07CN-100000	16	56.5"	\$73.70
8"	3200-08CN-100000	16	56.5"	\$84.19
9"	3200-09CN-100000	16	56.5"	\$91.66
10"	3200-10CN-100000	16	56.25"	\$101.40
12"	3200-12CN-100000	16	56.25"	\$122.80
14"	3200-14CN-100000	16	56.25"	\$159.14
16"	3200-16CN-100000	16	56.25"	\$207.98
18"	3200-18CN-100000	16	56.25"	\$227.10
20"	3200-20CN-100000	16	56.25"	\$261.45
22"	3200-22CN-100000	16	56.25"	\$291.55
24"	3200-24CN-100000	16	56.25"	\$328.45

